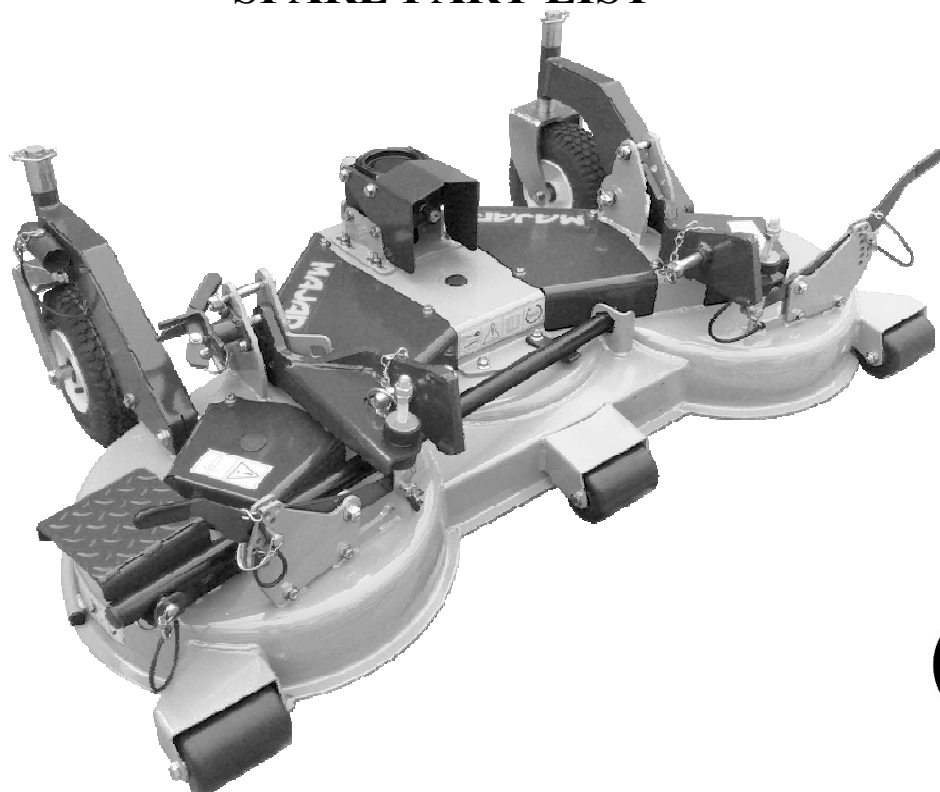


MAJAR®

USER AND SERVICE INSTRUCTION MANUAL

SPARE PART LIST



02/2019

Cutting deck MULCHING 1.53m 1.83m

TFP150M

TFP180M

Versions:

ISF310 for Iseki SF310-SF370

JD1580 for John Deere 1550-1570-1575-1585

KF3890 for Kubota F 2690-2890-3090-3890-3990

SCM314 pour Shibaura CM314-CM374

Please read the following instructions carefully before operating the machine and refer to them as needed. If you do not understand a part of the user manual, please contact your MAJAR reseller or:

MAJAR S.A
1 Route de Montréal - CS30074
11890 CARCASSONNE Cedex 9
Phone 0033 / 4 68 25 38 16

TABLE OF CONTENTS

TABLE OF CONTENTS	2	ADJUSTMENT AND USE	12
FOREWORD	Erreur ! Signet non défini.	1. Cutting height adjustment	13
TECHNICAL DATA	Erreur ! Signet non défini.	2. Cleaning and tilting	14
INSPECTION CHECKLIST	Erreur ! Signet non défini.	3. Use	15
SAFETY REGULATIONS	Erreur ! Signet non défini.	ENTRETIEN PAR L'UTILISATEUR	16
SAFETY STICKER	Erreur ! Signet non défini.	1. Periodic maintenance	Erreur ! Signet non défini.
DESCRIPTION AND VOCABULARY	6	2. Lubrication points of the machine	17
INSTALLATION AND COMMISSIONING	7	3. belt tension adjustment	17
1. Fitting the arm extension	7	4. Replacing the blades	18
2. Fitting the transmission on tractor	7	MALFUNCTIONS AND REMEDY	19
3. Cutting deck coupling	8	TIGHTENING TORQUE	Erreur ! Signet non défini.
4. Setting up and adjustment of hangers	10	C.E DECLARATION OF CONFORMITY	20
5. Uncoupling and storage	Erreur ! Signet non défini.	GUARANTEE	21
		SPARE PART LIST	Erreur ! Signet non défini.

FORWARD

Please read this user manual and the manual delivered with the rotary slasher cardan before operating your rotary slasher, the information allow you ensure quality work in complete safety. If the manual is not clear enough, please contact our technical service.

The security depends on the use of the machine with the limitations explained in this manual.

You have to know and to follow the safety regulations of this manual and of the tractor manual.

The machine you bought was carefully designed and manufactured in order to give you complete satisfaction.

As any mechanical gear, it requires cleaning and maintenance. Lubricate as described. Follow the regulations and safety information given in this manual and on the security stickers of the rotary slasher and the tractor.

For maintenance your MAJAR reseller has the competency and the original pieces to respond your needs.

Enter below model and serial number of your machine for reference.

MODEL : SERIAL N°:

In line with the goals of continuous improvement MAJAR reserves the right to change the machines without changing the sold machines. The illustrations et characteristics of this manual may vary slightly on your due to production changes.

No part of this manual may be reproduced, copied or made public by whatever means without authorization of MAJAR.

Throughout the manual the terms “left” “right”, “front” “rear/back” are given referring to the driver’s position. The term IMPORTANT is used to est utilisé pour indicate that a failure may cause damages for the machine. The terms WARNING and DANGER are used with safety alert symbols to indicate the degree of safety hazard.



This symbol means: attention, be careful, your safety is involved. It reminds the safety instructions or focuses your attention to dangerous practices which may cause injury or operational occurrence.



WARNING reminds the safety regulations: may cause injury if not observed



DANGER reminds the safety regulations: may cause irreparable, lasting injury or cause death if the good precautions are not taken

TECHNICAL DATA

Reference	Power unit	Power grip output		Overall width (cm)	Weight (Kg)	Blades speed Tr/Min
		RPM	size			
TFP150MISF310	ISEKI SF310-SF370	2000 tr/mn	1"3/8 Z6	174	159	3250
TFP180MISF310				192	189	2750
TFP150MJD1580	JOHN DEERE 1550-1570-1575 1580-1585	2250 tr/mn	1" Z15	174	159	3250
TFP180MJD1580				192	189	2750
TFP150MKF3890	KUBOTA F 2690-2690-2890 3090-3890-3990	2500 tr/mn	1" Z10	168	159	3250
TFP180MKF3890				186	189	2750
TFP150MSCM314	SHIBAURA CM314-CM374	2250 tr/mn	1" Z15	174	159	3250
TFP180MSCM314				192	189	2750

Airborne-noise and vibrations: the sound pressure level on the driver position is inferior to 70dB(A). The vibrations transmitted to the driver of the tractor are insignifiant.

INSPECTION CHECKING LIST

The assembly, installation and commissioning of the mower deck is the MAJAR reseller's responsibility. Please read carefully the use and care manuel and the savety regulations. Make sure that the indicated points of the checklist had been verified before delivery and on delivery and amended if necessary before delivering the machine to the owner.

INSPECTIONS BEFORE DELIVERY

- Check that all the safety screens, grids and safety measures are in place and in good condition
- Check that all screws and bolts are tightened to the right torque value (see table)
- Make sure that the safety stickers are in place and in good condition
- Check the oil level in the angular gearbox (recommended oil **85W140**)
- Check the other lubrication points, apply new grease if necessary
- Lubricate the nipples and the machine; check the oil level in the angular gearbox
- Check that the machine is operating correctly
- Check transmission status

VERIFICATIONS AT DELIVERY

- Check the power grip speed and the rotation of the tractor
- Show the client how to mount the machine and how to realize the tool adjustments
- Explain the importance of lubrication and show him the lubrication points
- Show him les safety devices, safety measures and options
- Present the use and instruction manual to the client as well as the specific cardan manual, ask to read it
- Explain to the client to use the adequate signage when driving on the road.

SAFETY REGULATIONS



WARNING

Some illustrations may show the machine without protective screen or shield. Never use the machine without these devices.

- * Learn how to stop the machine in emergency situation. Read this manual and the tractor manual

- * Disengage the power grip, stop the motor, apply the handbrake and remove the key before all settings, adjustments, maintenance or disassembly

- * Control prior to each use the tightening of screws and nuts, particularly of the blades and hubs.

- * Make sure that all the safety screens, grids and safety measures are in place and in good condition

- * Clean the worksite from branches, stones or debris which may be projected and cause injury or damage

- * Make sure that the safety stickers are in place and in good condition

- * Avoid absolutely touching in any way the moving parts

- * Clean the grass and debris accumulations

- * Make sure that the machine is in good working condition before using it

- * Never let anyone else to the driver's cab during adjustment interventions, maintenance or disassembly of the machine

- * Check periodically tightening torques of all fasteners

- * While maneuvering on slope always work up and down, never across the slope

- * Place the wheels according to the setting de la voie la plus large afin d'augmenter la stabilité du tracteur

- * Avoid unstable embankments, rocks and holes; this can be dangerous when moving

- * Activate all the safety equipment

- * Only operate the control panel when you are correctly seated in front

- * Check visually hydraulic leaks and missing or faulty parts. Repair when necessary before every manoeuvre

- * Never let anyone else use this machine if the person did not read and understand this manual

- * Never let children use this machine

- * Always wear protective equipment for head, ears, hands and feet using this machine.

- * Always wear close-fitting clothing to avoid to be snatched by the moving parts or to hang on

- * Always work on daylight or with good artificial light

- * It is absolutely forbidden to transport persons or animals on the machine.

- * Do not use the machine in areas where you cannot keep safety distance from the persons or animals to avoid projection injury

- * If the tractor has a ROPS Roll Over Protective

Structure, fasten your seat belt

- * Make sure that nobody or anything is behind you while backing off

- * Do not start or stop the engine abruptly on slopes

- * Do not use the machine on too big slopes

- * Reduce speed on slopes to avoid a loss of control

- * Be careful while driving along embankments or ditches

- * Pay attention to the holes or other area accidents on undulating terrains

* For the use on public roads the operator needs to ensure that the machine est complied with the Highway Code, particularly signage, and he should observe strictly the standards in his country.

SAFETY STICKERS

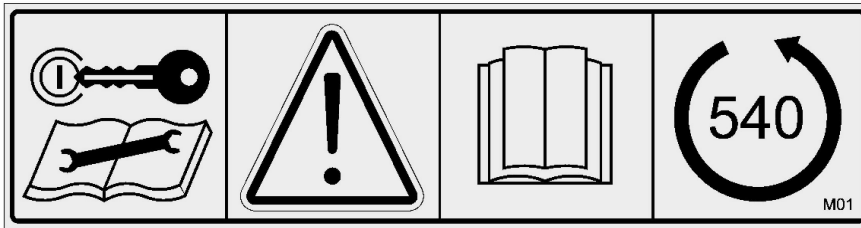


WARNING

It is strictly forbidden to remove the safety stickers and symbols specifying danger. Missing or damaged stickers must be replaced immediately. Contact your MAJAR reseller.

The information illustrated by these symbols must be necessarily respected. The noncompliance with these rules may cause death or serious injuries.

1



ATTENTION

Stop the tractor and remove the key before adjustment or maintenance operation

Read carefully the manual before operating the machine.

Check the power grip speed and direction of rotation before setting up the drive shaft.

2



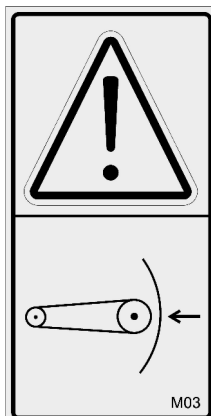
ATTENTION

Move away from the machine.

Danger of thrown objects.

Moving parts, risk of hand injuries, risk of foot injuries

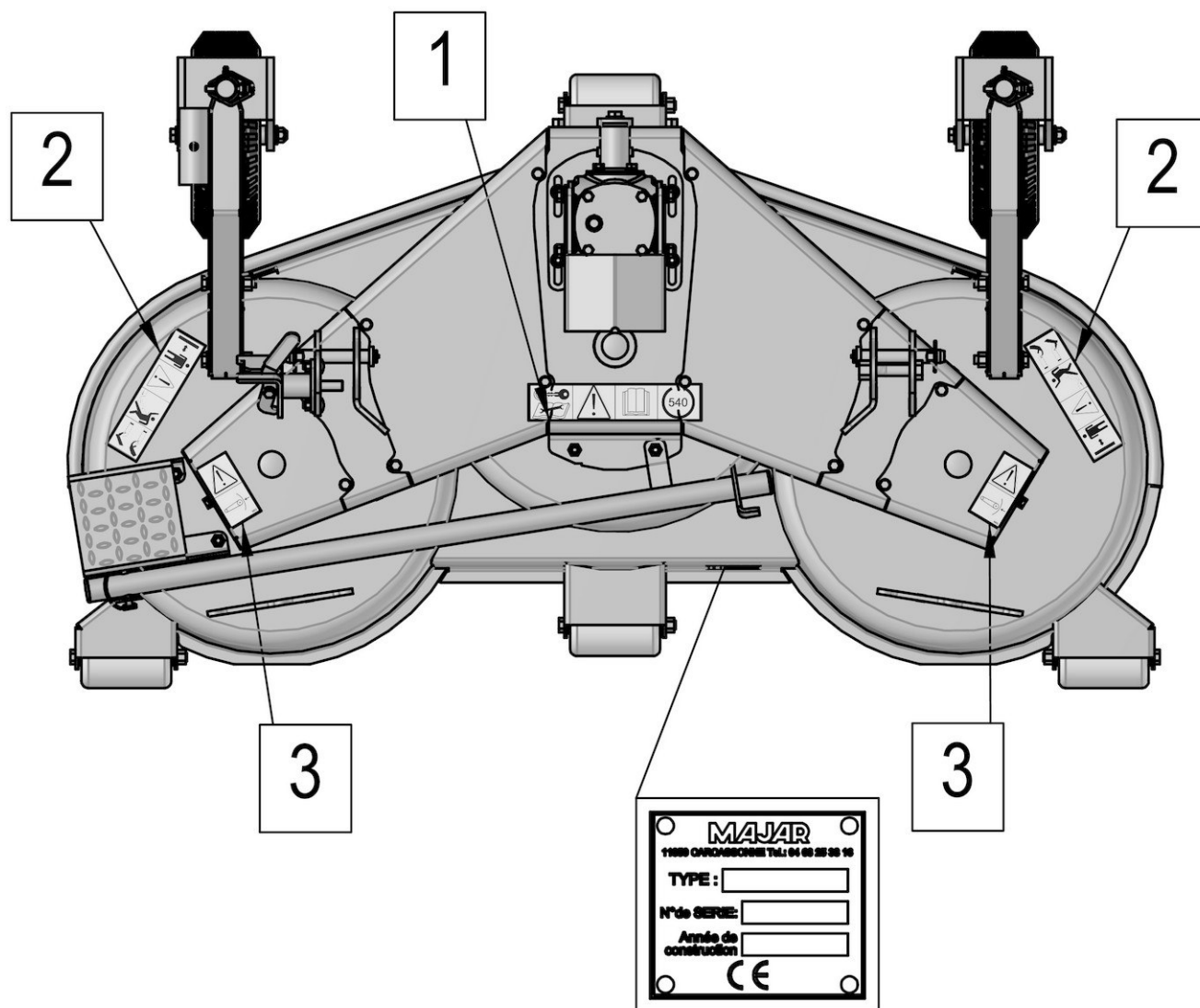
3



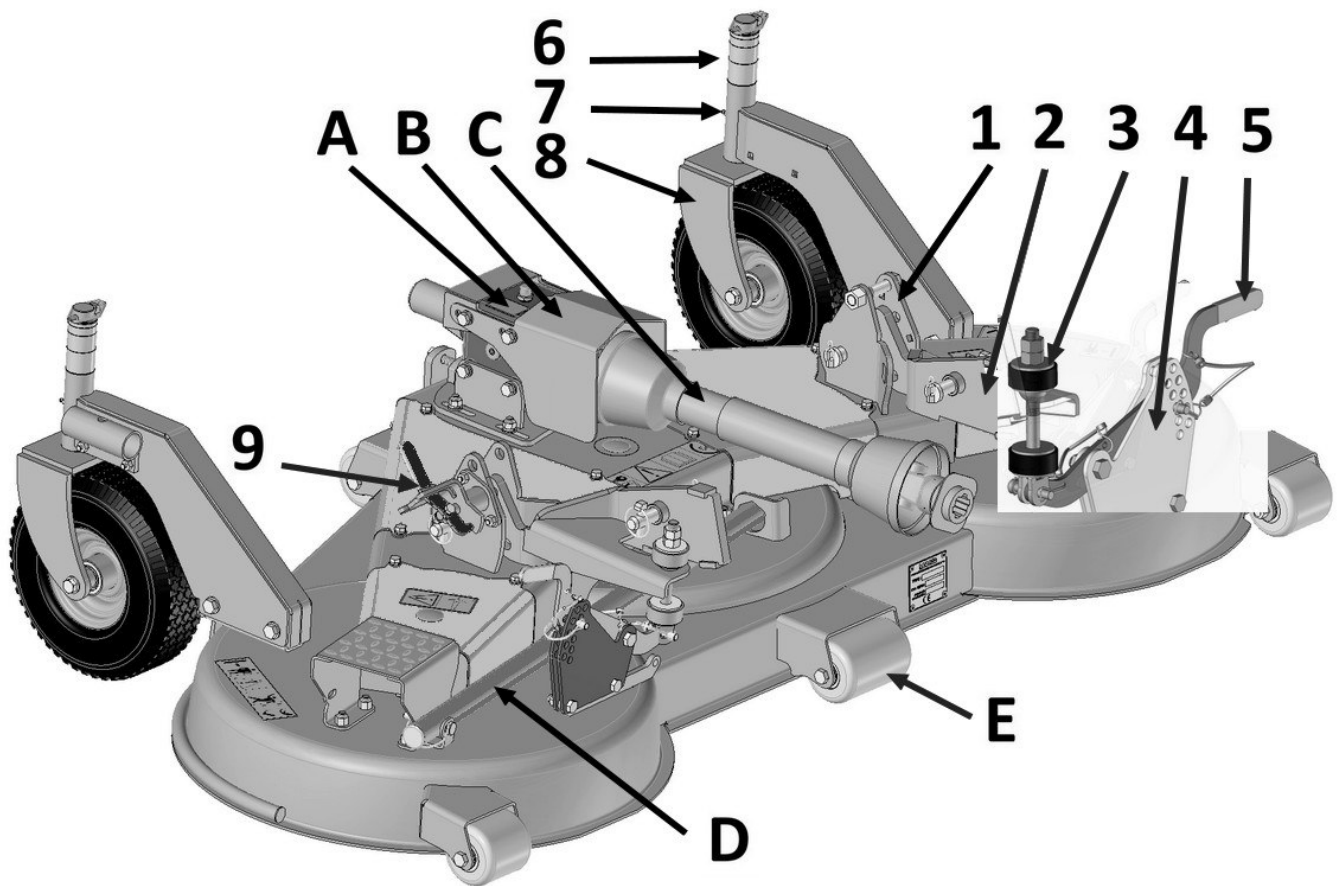
ATTENTION

Transmission, moving parts, do not remove the guard.

EMPLACEMENT OF THE SAFETY STICKERS AND THE IDENTIFICATION PLATE



DESCRIPTION AND VOCABULARY



1. Coupling plate
2. Arm or arm extension
3. Hangers
4. Adjustment plate (cutting height)
5. Adjustment lever (cutting height)
6. Wheel chock (cutting height)
7. Axle tube
8. Wheel arm
9. Indexing lever (tilting)
- A. Angular gearbox
- B. Gearbox sheet metal protection
- C. Cardan shaft
- D. Handle (tilting)
- E. Anti-scalping roll

INSTALLATION AND COMMISSIONING

The installation and commissioning of the tool are the responsibility of the MAJAR reseller. The rotary slasher must be delivered fully mounted, lubricated and adjusted to the normal operating conditions.



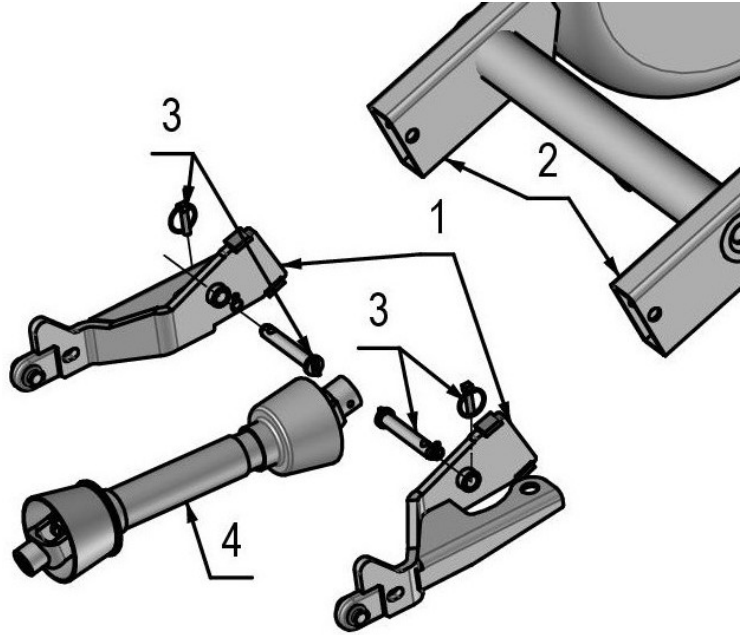
WARNING Always wear safety footwear, protection equipment for eyes, ears and hands when climbing onto the machine. Do not allow anyone to sit on the driving position when mounting the machine.

COUPLING OF THE MACHINE

1. Assembly of the arm extensions

Versions Iseki and John Deere only

- Mount the right extension and the left extension (rep.1) in the tractor arms (rep.2), then pick up with the pins and the axis (rep.3).



2. Assembly of the transmission (tractor side)



WARNING

The cardan shaft is specific and has the correct length. This type of transmission should never be cut. Do not replace by a commercial transmission without the same speed and power characteristics.

- Connect the output shaft of the tractor and check the correct locking.
- Connect the chain of the protection system on the tractor side to the fixed part of the chassis. Maintain the transmission in the air using a rope or strap to facilitate the coupling of the cutting deck.



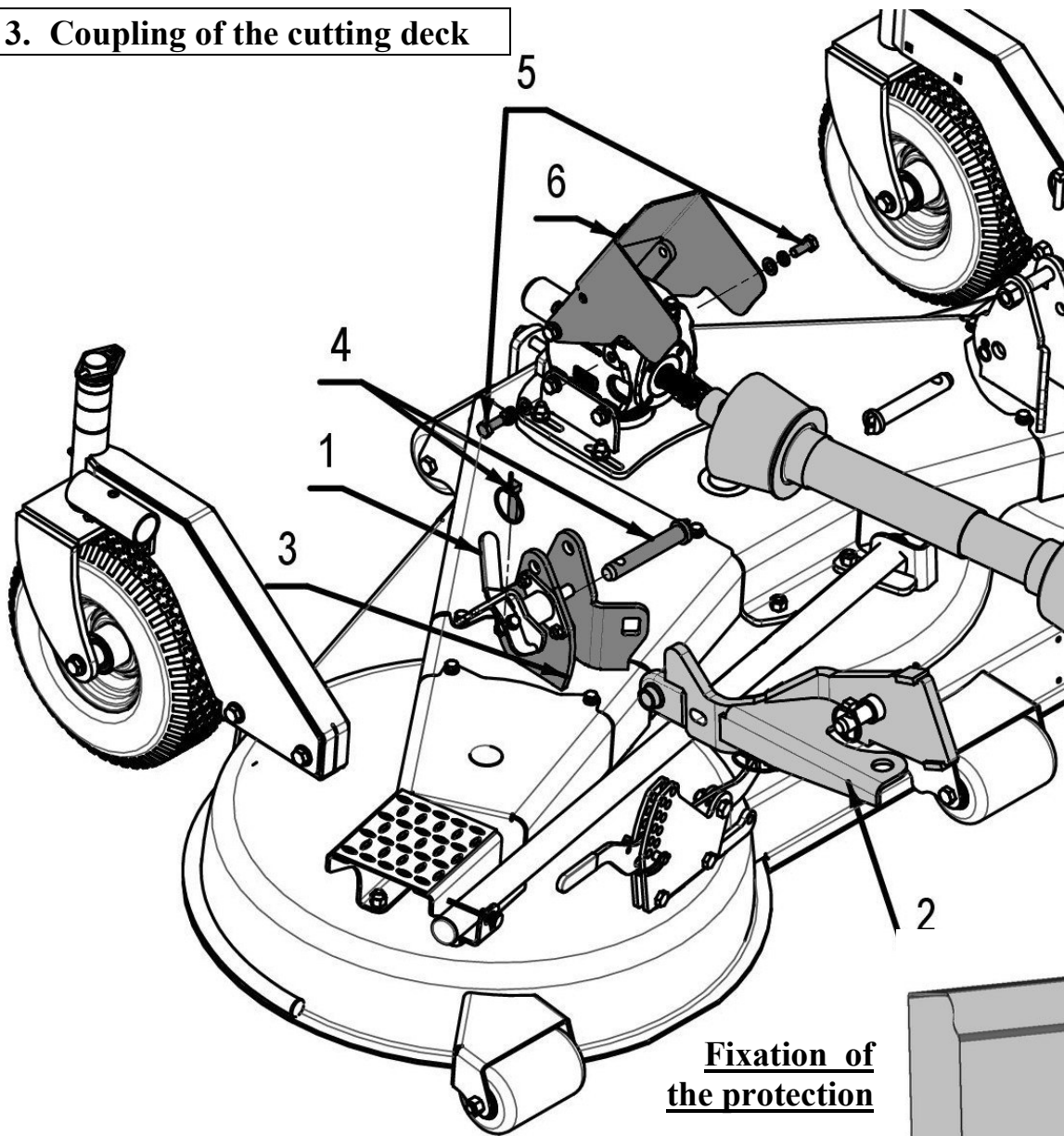
To connect the transmission :

- Lubricate the shaft to facilitate assembly and disassembly
- Pull on the palett pushing thoroughly the transmission on the shaft
- Release the palett and remove slowly the transmission until locking.

To remove the transmission :

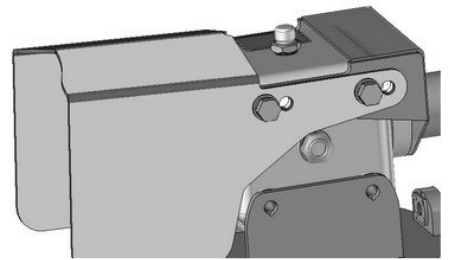
- Pull the palett, maintain the palett pulled and pull the transmission.

3. Coupling of the cutting deck

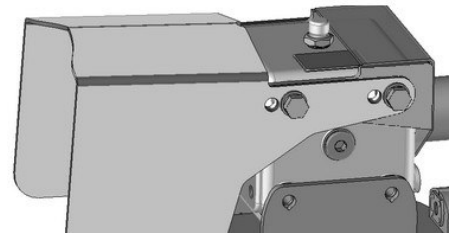


Fixation of the protection

Iseki – John Deere



Kubota



- Position the arm ball lightly under the pin when lifting the tractor (rep.4).
- **Stop the engine and remove the key to avoid accident.**
- Pull and block the indexing lever (rep.1) in open position to facilitate the arm access
- Remove the 2 screws of the protection sheet (rep.5), and loosen the other two. Rotate the protection (rep.6).
- Approach the arms (rep.2) and the linkage plate (rep.3) to a few centimeters.
- Mount the transmission and check the locking. Fix the chain of the protection system to one of the linkage plates
- Entrer the 2 arms (rep.2) between the plates (rep.3)., and pick up with the pins and the axis (rep.4).
- Replace the protection using the screws.
- Release the indexing lever (rep.1).

CARDAN SHAFT SETTING UP

General information



DANGER More detailed information in the specific manual of the cardan which is an initial part of the safety documentation to read carefully. In the event of a discrepancy with the following, follow the instructions given in the specific manual of the du cardan. The cardan must have CE marking.



WARNING The safety devices (Freewheel, friction torque clutch ...) must be imperatively placed nearby the machine.

Connection of the 2 transmission tubes :

Connect the 2 sliding parts, with the 2 cardan ends facing the same direction. If no connection is possible, turn one of the 2 parts half around.

Setting up the transmission :

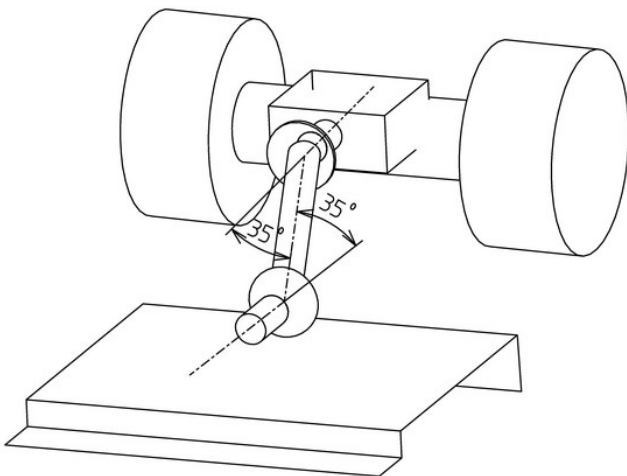
Connect the transmission to tracteur, check the locking device is locked in the shaft. Connect in the same way the tractor and check that both ends of the cardan are locked. Attach the protectors of the transmission on the tractor and tool so that they will not turn with the transmission.

Check the length if the transmission :

Use the lifting and search the shortest position of the transmission , check that there is a stroke of 2 cm. Use the lifting and search the largest transmission position, check that there is still a connection of 8 cm at least.

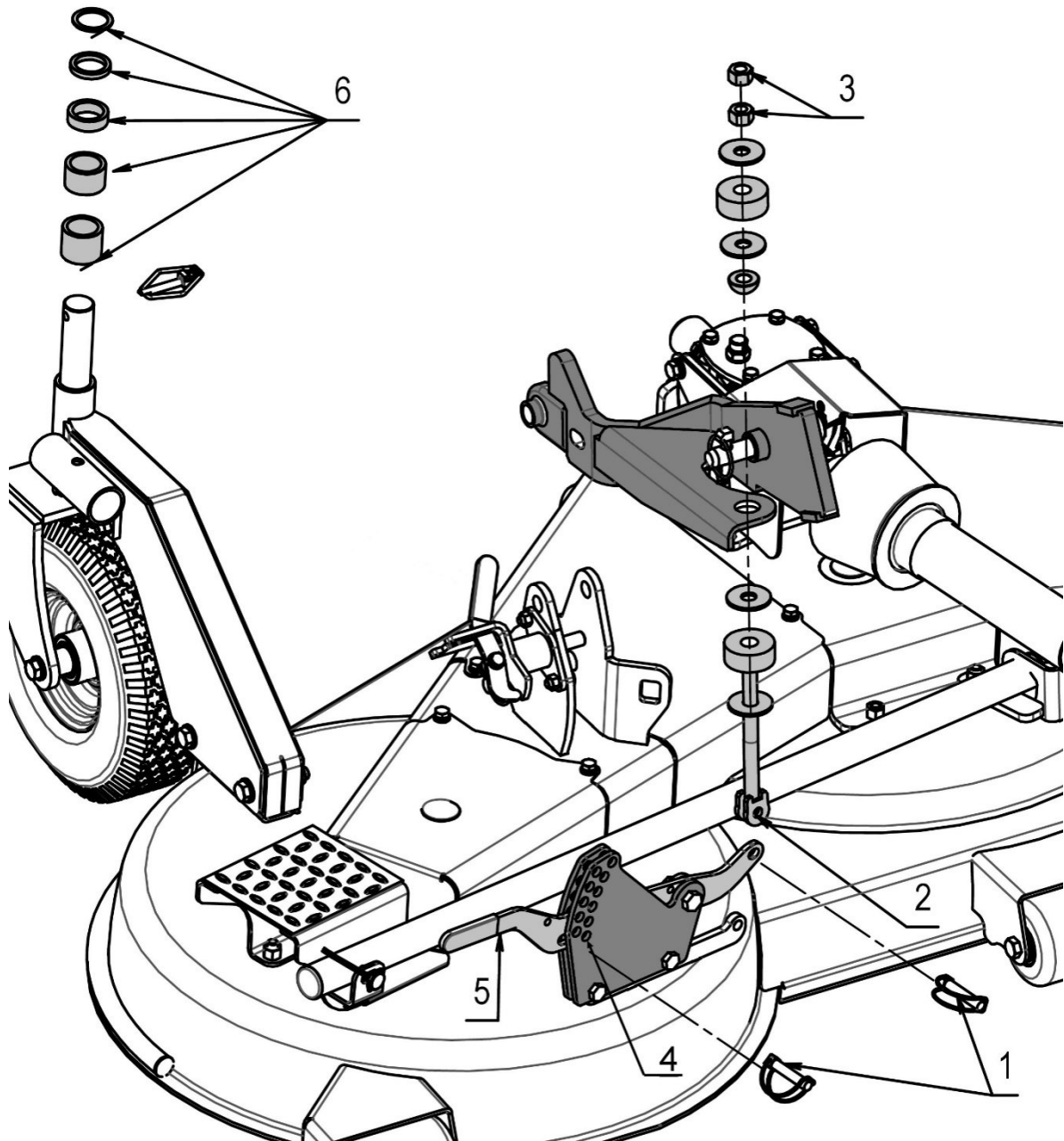


Check that no parts of the mower deck or the tractor get in contact with the transmission when lifting the machine. Check that you do not reach the maximum angle of the transmission



NEVER EXCEED THE MAXIMUM ANGLE OF THE TRANSMISSION

4. Setting up and adjustment of hangers



Setting up the hangers :

- Remove the 4 pins (1) of the adjustment levers (rep.5).
- Place the axle of suspension (2) 2 iron washers and 1 caoutchouc washer, run the axle through the hole of the lift arms, then, place the sphered washer, 2 other iron washers and the caoutchouc washer as shown. Add the 2 nuts without blocking.

Adjusting the hangers :

- Fix the hangers (rep.2) on the levers (rep.5) with the pins (rep.1)
- Index the levers on **the lowest boreholes** of the adjustment plates (rep.4) with the pins (rep.1).
- Operate the lift of the tractor to release the wheel arms, place all the wheel chocks (6) above the supports and lock the pin.
- Set the machine on the flat floor to level and lower the lifting of the tractor at most.
- **Stop the engine and remove the key to avoid accident.**
- Level the deck adjusting the length of the 2 hangers with the nuts (3).
- Block the nuts and locknuts tightly (3).

5. Uncoupling and storage



WARNING The machine must be stored in an area sheltered from bad weather on a firm and level ground. Clean and grease the machine before storing.

Use also the mounting information described in the previously to uncouple the deck

- Take the machine to storage area
- Put on the ground lowering the lifting of the tractor
- Turn off the ignition and apply the handbrake
- Remove the pin of the adjusting lever on the indexing deck and then on the hangers
- Disengage the PTO shaft on the tractor
- Remove coupling pins at the end of the arms
- Drive the tractor in reverse
- As far as possible, do not disassemble the hangers to keep the length setting.

ADJUSTMENT AND USE

The safety is a challenge that concerns the most while designing and manufacturing this tool.

However, the efforts of the constructor may be shattered due to user carelessness.

The accident prevention depends on prudence and training of staff in charge of using and maintenance of the machine

The best safety device is a careful and informed user; we ask you to be this user.

The user of this machine is responsible for the use and safety. The user has to be qualified and trained to the machine and also know the tractor. Read all the safety instructions.

This machine is designed to cut lawn. It is not designed to be hitched to inappropriate power and weight engines, to work on excessively pebbly ground, to cut hard objects, stones, garbage. It should not be used to transport persons or material.



WARNING The following operations must be only and exclusively done when the engine is switched off, handbrake applied. If necessary lift the machine, place the supports to prevent from falling or failure of the lifting of the tractor.

1. Cutting height adjustment:

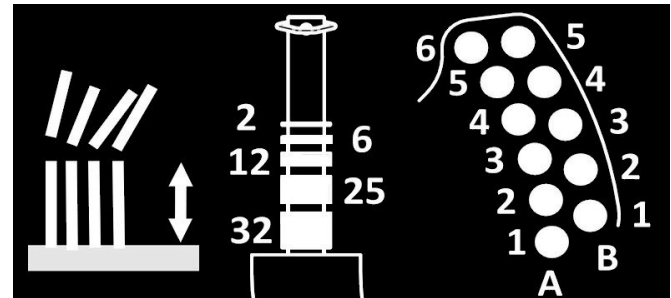
➤ Concept

The cutting height is adjusted by changing:

- The position of the levers (1)
- The position of the different chocks (2)

The table (3) shows, depending on the cutting height, the chocks to place under the axle tube and the indexing position of the lever.

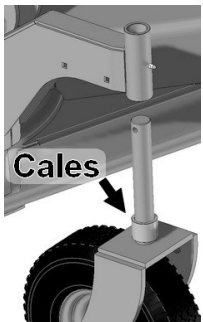
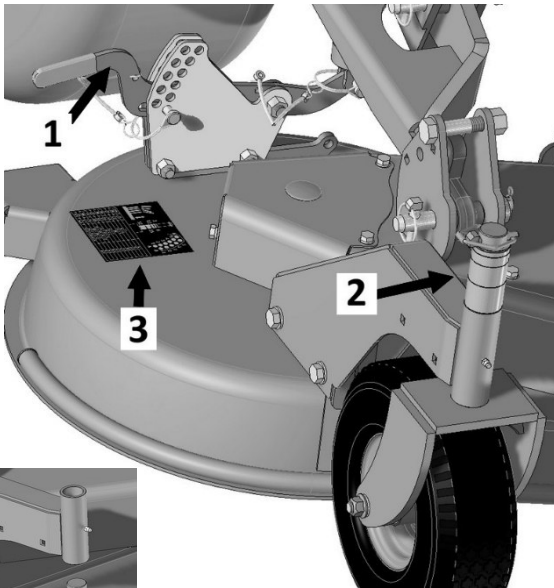
The different combinations allow to obtain cutting positions until 10 cm.



mm	in		
25	1,0	----	A 1
33	1,3	6 + 2	B 1
39	1,5	12 + 2	A 2
50	2,0	25	B 2
56	2,2	25 + 6	A 3
63	2,5	32 + 6	B 3
71	2,8	32 + 12 + 2	A 4
77	3,0	32 + 12 + 6 + 2	B 4
85	3,3	32 + 25 + 2	A 5
94	3,7	32 + 25 + 12	B 5
102	4,0	32+25+12+6+2	A 6

To adjust the cutting height at 25mm (1") as shown:

- broach the lever through the hole A1
- no chock under the tube



To adjust the cutting height at 50mm (2"):

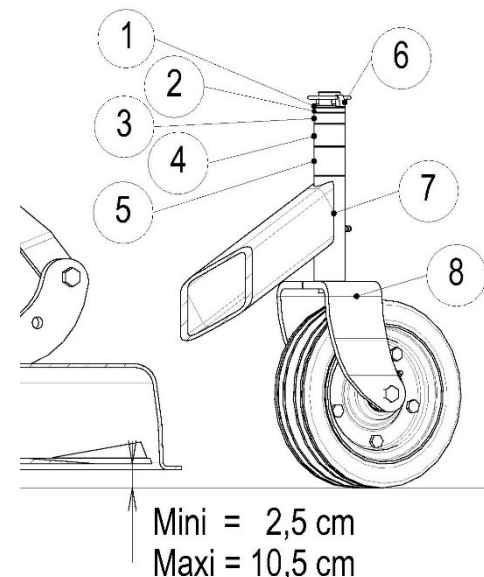
- broach the lever through the hole B2
- place the chock of 25 mm under the axle tube.

➤ Operations to adjust the cutting height

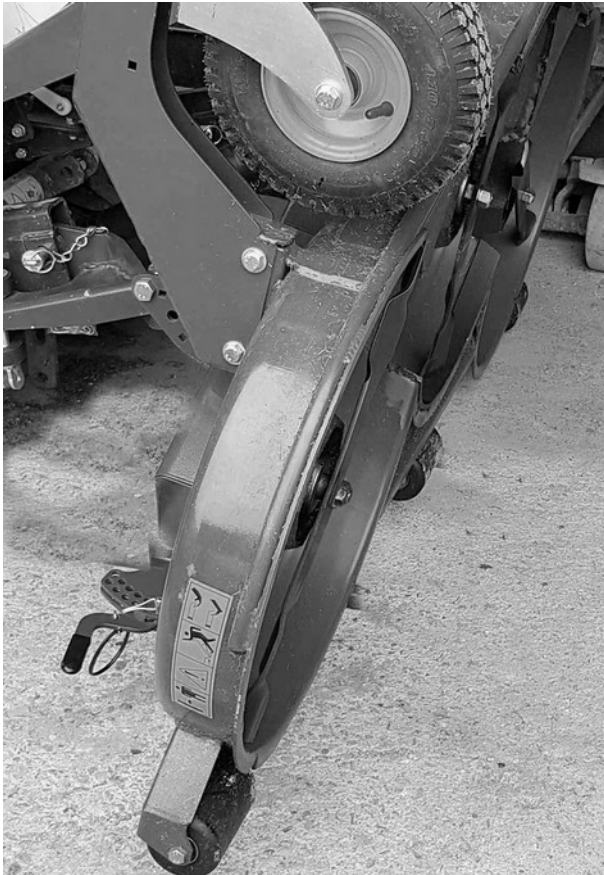
- Lift the machine with the tractor lifting
- **Stop the engine and remove the key to avoid accident**
- Remove the pin (6) and push out the wheel arm downwards (8).
- Place the wanted chock height on the axle of the wheel arm
- Replace the wheel arm, then the remaining chocks and pins (6).
- Put the mower on the ground and adjust the lever position in the indexing decks so that the mower is horizontal.

The mowing deck is equipped with additional anti-scalping rollers to avoid scraping the ground with eventual bumps or slopes.

When you adjust cutting height on a flat ground, the rollers must not press on the ground.



2. Cleaning and tilting:

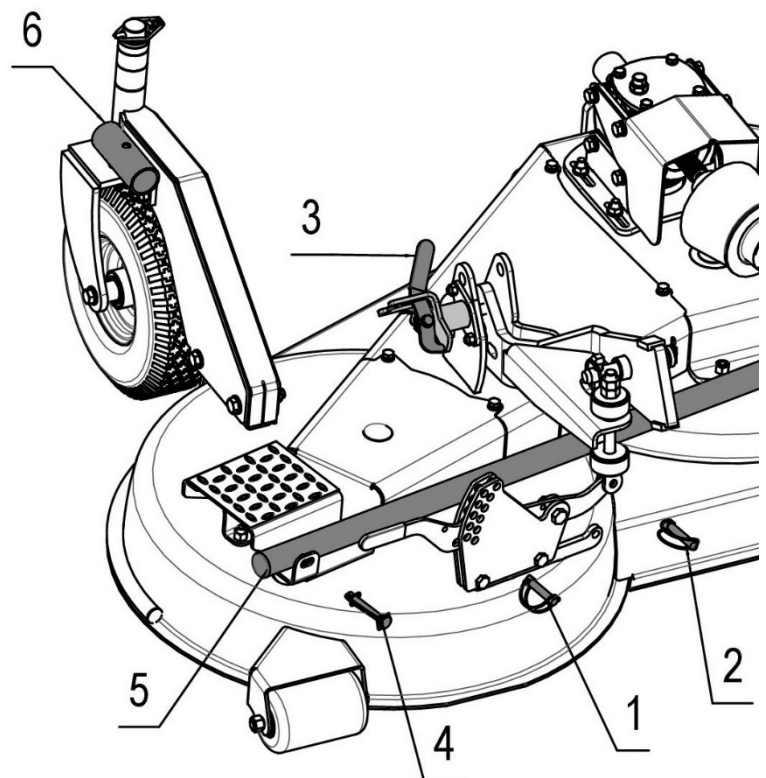


To facilitate cleaning and visual control of the cutting deck, an easy and quick tilting mechanism allows to access to the elements under the deck.



DANGER

Only use this for cleaning and visual control. Do not do manual maintenance under the deck without securing the lifting and tilting of the deck with appropriate lifting means.



- Lower the deck to the ground with the linkage control of the tractor.

- Lifting the cutting height lever, remove the pins (1) of the indexing deck and put the mower on the ground lowering the levers.

- Remove the pins (2) of the hangers at the end of the lever.

- Remove the pin (4) of the foot board and remove the handle (5).

- Place the handle in the tube (6) of the wheel arm and reuse the pin (4) to block the handle.

- Make sure that the indexing lever (3) is free.

- Lift the tractor lifting on the maximum. Turn off the engine and apply the handbrake.

- Tilt the mower with the handle until the automatic locking of the indexing system (3)

- Once the cleaning is completed, push the handle deindexing the locking and lower slowly the mower.

- Replace the handle, and broach it with the pin (4) on the foot board.

- Lower at most the lifting of the tractor.

- Hang up the hanger at the levers with the pins (2).

- Reposition the levers at the right cutting height with pins (1).

3. Use



WARNING

Always wear close-fitting clothing to avoid to be snatched by the moving parts. Use safety footwear and protective equipment for eyes, ears and protection from the dust.

Follow all safety instructions of the tractor and of the cutting deck chapter «SAFETY REGULATIONS»

Stop immediately the power grip and the tractor in the following conditions:

- abnormal noise
- abnormal vibration
- abnormal smell
- impact of the blade with a hard object

If you cannot identify and correct the problem, contact your MAJAR reseller.

Do not start the machine when lifted. Lower on the ground and lift a few centimeters before connecting power grip with the motor idling. Lower the machine in work position. Increase the engine speed until the nominal speed indicated on the dashboard of the tractor.

• Speed

The recommended working speed is between 5 and 10 km/h. It depends on the height and the nature of the cut grass.

Decrease the speed on uneven terrain to avoid shocks and rebound on the cutting deck and the tractor.

Decrease the speed in short turns to avoid damaging the turf.

• Mowing

To obtain a good Mulching quality;

- Do not mow on too wet turf. Mow preferably dry grass.
- Mow regularly, the crushing quality and the recycling of the residues on the ground are better if you only cut a few centimeters.
- Adapt working speed at the height you want to cut.
- Do not mow more than one third of the grass height all at once.
- Clean the deck from grass accumulation and use sharp blades.

MAINTENANCE BY USER



DANGER

Prior to maintenance or repair work on the machine, stop the engine, apply the handbrake and remove the key. Never let anyone else to the driver's cab. If lifting the machine is necessary, place the supports to prevent falls or failure of the lifting system.

1. Periodic maintenance

DAILY MAINTENANCE BEFORE STARTING WORK

- Check the condition and fixation of the protections of belts, cardan shaft and angular gearbox.
- Make sure that there are no leaking traces, if not contact your reseller to repair the machine.
- Clean entirely the machine from grass or dirt accumulations which qui reduce performance and can mask failure or leakage.
- Check the presence, fixation and degree of wear of the blades. They should never be twisted, damaged or worn.
- Lubricate the machine (see paragraph « lubrication of the mower page 14).



WARNING

All blades should be fitted and in good conditions to avoid imbalance on the mower which could cause vibrations and rapid deterioration of the device. Damaged or twisted blades reduce performances, need more power and can worsen the transmission system and the chassis.

INITIAL USE

- After 2 hours of use, control tightening of all fasteners.
See table Tightening torque

EVERY 40 HOURS WORKED

- Control tightening of all fasteners.
- Grease the wheels and wheel arms (see paragraph « lubrication of the mower » page 18).
- Grease the blade hubs (see paragraph « lubrication of the mower » page 18).
- Grease the crosspieces and les sliding tubes of the cardan shaft (see notice of cardan).



Clean the greas gun and use the grease pump. Do not leave excess grease on the pieces

EVERY 100 HOURS WORKED

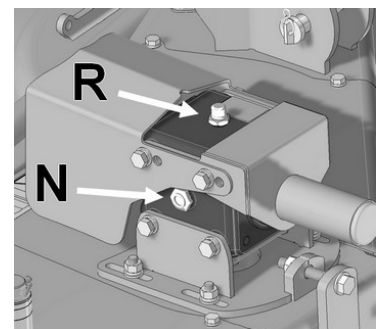
- Check the oil level of the angular gearbox: make sure that the oil arrives at the plug (N), if necessary complete on the plug (R). Use oil 85W140. The first drain must be done after 50 hours. The next after 500 hours.

Capacity about 0.5 L.



Never jamais fill uo completely the gearbox.

- Clean the transmission from grass accumulations and control the belts.



EVERY 500 HEURES WORKED

- Drain the gearbox with a syringe or the plug N. depending on model. Capacity about 0.5 L.

2. Lubrication points of the machine

Do not lubricate excessively: one or two presses of the grease gun is sufficient and clean the surplus grease.

An excess of grease can dislocate the bearing seals.

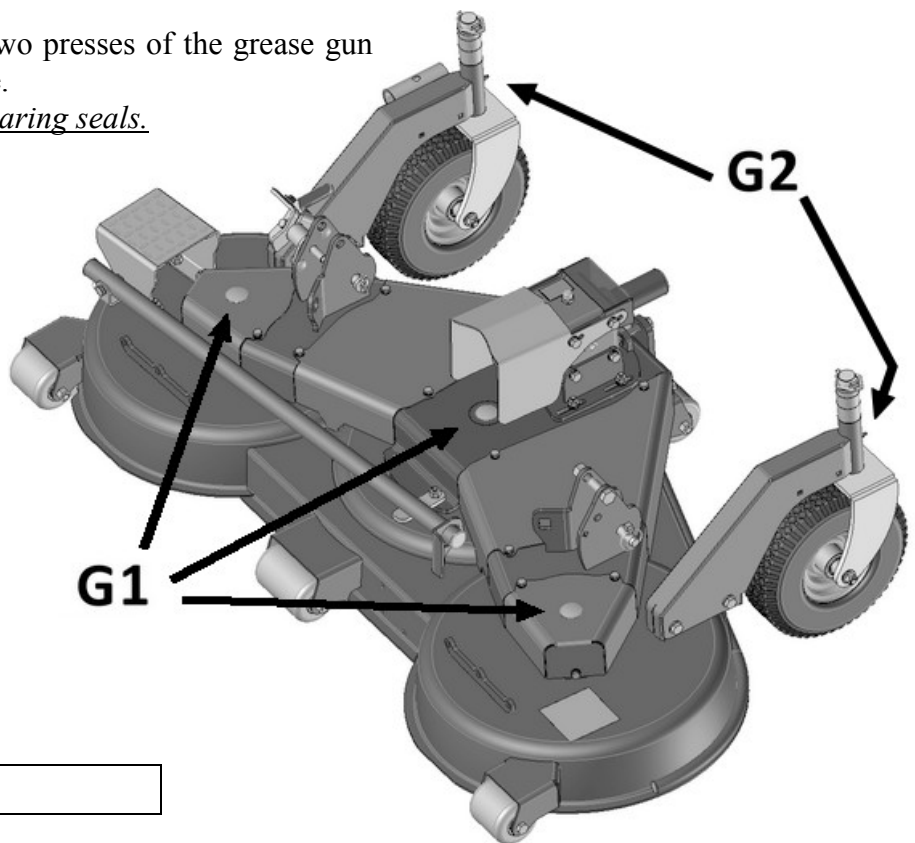
Lubrication of the blade hubs:

3 greasers G1

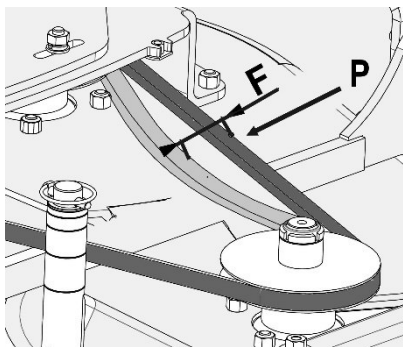
- Remove covers and grease

Lubrication of the wheel arms:

2 greasers G2



3. Belt tension adjustment



After a running-in period (about 2 - 4h) and then regularly, it is important to check the tension and if necessary adjust tension.

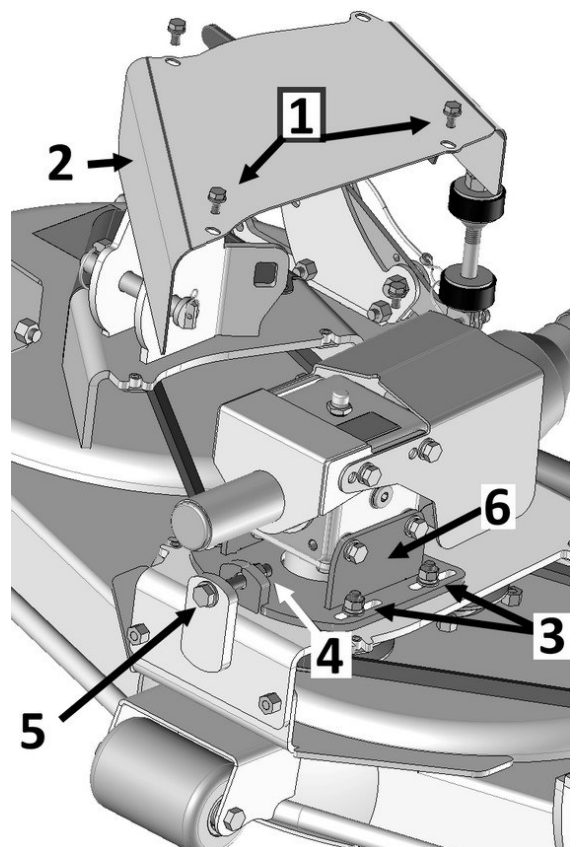
« F » must be about 15mm under effort « P » of 10 Kg.

If you are unable to obtain an identical tension on the 2 belts, you need to replace by 2 new belts without fail.

- Remove the 4 screws (1) on the 2 casings (2), then remove the 2 casings.
- Control the tension of the 2 belts

Tension:

- Release without removing the 4 nuts (3) which block the slide (6)
- Release the locknut (4) of the screw (5).
- Turn the screw (5) to replace the slide (6) until the good tension
- Block the locknut (4) and the 4 nuts (3) of the slide.
- Remount the protective casing.



4. Replacement of blades



WARNING The blades are sharp and may cause injury, always wear gloves when handling them, be careful not to cut yourself.

Couple the machine to the tractor, set down on the ground on chocks so that the blades turn free. Stop the engine, apply the handbrake and remove the key.



DANGER

When you replace the blades, you are required to change the locknuts. Contact your MAJAR reseller to obtain original spare parts. Do not replace by other spare parts with different characteristics.

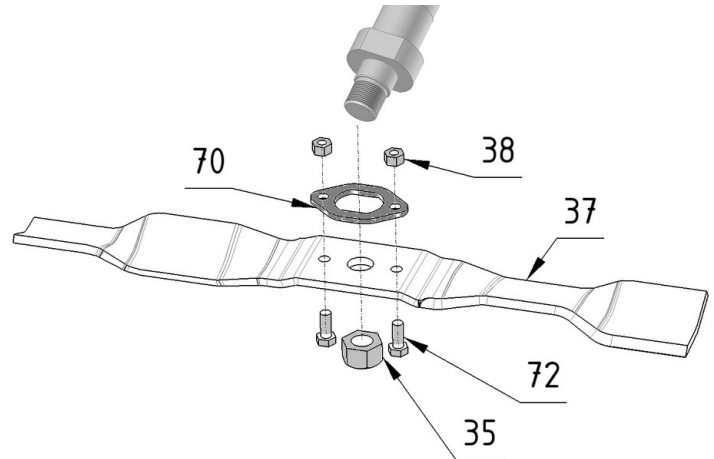
Disassemble and reassemble the blades hub by hub to keep the others as example for the setting up the new blades.

Ensure :

- Cutting edge side
- The position of the lock washer de blocage on the flat drive of the hub impeller
- Tightening of the selflocking nut.

Disassembling:

- Unscrew the nut (35)
- Draw out the blade (37)
- Disassembly the lock washer (70)



Reassembling:



Replace screws and nuts with new pieces (72-38-35)

Check the anti-loosening washer (70) and replace if necessary

- Mount washer (70) with 2 screws and nuts (72-38) on the blade. Make sure to put the washer (70) and the nutset les écrous (38) over the blade. Do not use longer screws which would deteriorate the blade hub.
- Mount the blade on the axle of the hub making sure to align and slot the washer (70) on the axle of the hub.
- Mount a new nut (35) without blocking and make sure that the blade, washer (70) is slotted on the motor shaft.
- Block the nut (35) at the tightening torque 350 N.m

MALFUNCTIONS AND REMEDY

PROBLEM	CAUSE	REMEDY
Transmission system is noisy	The hub bearings are worn or damaged	Have the machine controlled by reseller and replace bearings.
	The belts are worn or not bended	Have the machine controlled by reseller , bend the belts or change.
	There is not enough oil in the gearbox	Refill the gearbox as mentionend in the manual
The mower vibrates	The blades are unbalanced	Check and change damaged blades
	Damaged bearings	Have the machine controlled by reseller
	Wrong rotation speed	Check speed and rotation direction of the power grip
	Damaged cardan shaft	Have the machine controlled by reseller
	Bolt fastening loosened	Retighten bolts
	Forward speed too high	Reduce speed
	Bushweed or brambles in cutting zone	The machine is not suited for this job
Lawn is badly cut	Forward speed too high	Reduce speed
	Height of cut grass too heigh	Change cutting height
	Blades worn or damaged	Check and change damaged blades
	Grass too wet	Mow when grass is dry
	Belt worn or loose	Tighten or change belt

TIGHTENING TORQUE

Screw diameter (mm)	Wrench size (mm)	Torque setitng (N.m)
8	13	20
10	15/16/17	50
12	18/19	85
14	21/22	130
16	24	215
18	27	300
20	30	435

C.E DECLARATION OF CONFORMITE

The letters **CE** on the identification plate of this machine certify that it is conforming to EC machine directive 2006/42/CE.

MAJAR	
11850 CARCASSONNE Tel.: 04 68 25 38 16	
TYPE :	<input type="text"/>
N°de SERIE:	<input type="text"/>
Année de construction	<input type="text"/>
CE	

The Director,
Mr Chéca

GUARANTEE

Each new manufactured by MAJAR SA is guaranteed as follows below, warranted against defects of construction and assembly and/or of the materials when used appropriately during 1 year.

1° This guarantee is limited to 1 year to the replacement of pieces mounted and recognized as faulty by MAJAR.

2° All pieces requested on guarantee must be returned to MAJAR for inspection, reparation or replacement prepaid postage with proof of purchase of the machine, serial number and carefully packed for protection.

3° The machine must not be damaged, repaired or maintained without authorization from MAJAR. The machine must not have had an accident, been misused, abused or used acting not conform instructions and specifications contained in this manual

This guarantee does not oblige MAJAR or representative to reimburse labor costs or transport costs of the machine for reparation.

NO GUARANTEE WILL BE APPLIED TO THIS EXCEPT THE LEGAL WARRANTY FOR HIDDEN DEFECT.

MAJAR CANNOT BE HELD RESPONSIBLE FOR DAMAGES OR COSTS INCURRED BY THE MACHINE FOR PAR EXAMPLE:

1 RENTAL FEES FOR MATERIAL

2 LOST OF SALE

3 EXECUTION OF WORK CARRIED OUT NORMALLY BY THE MACHINE

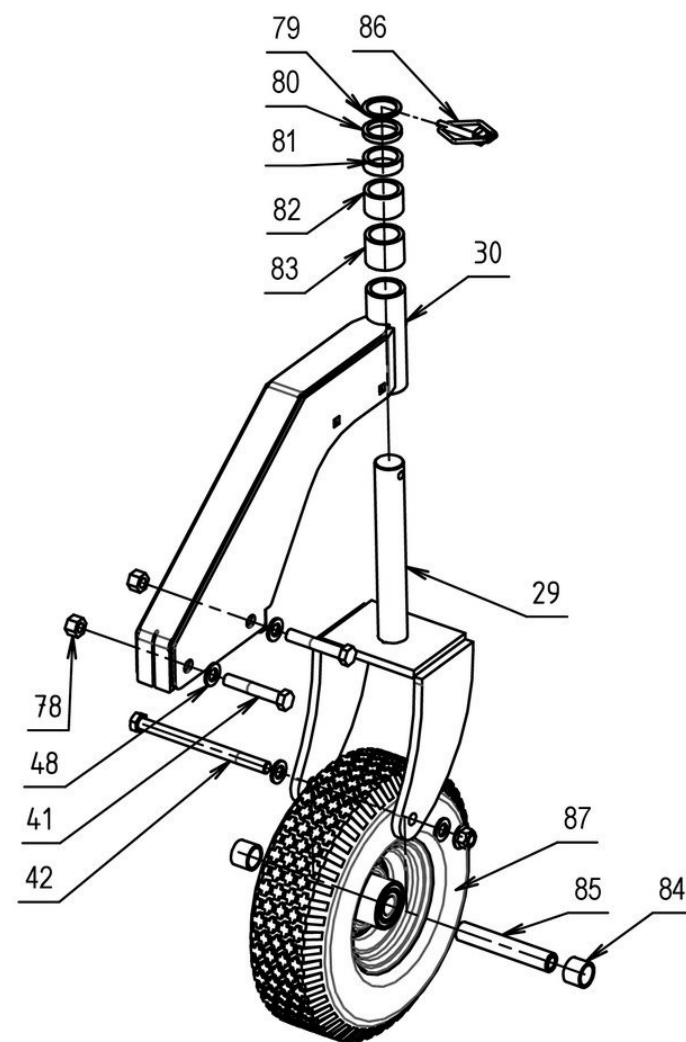
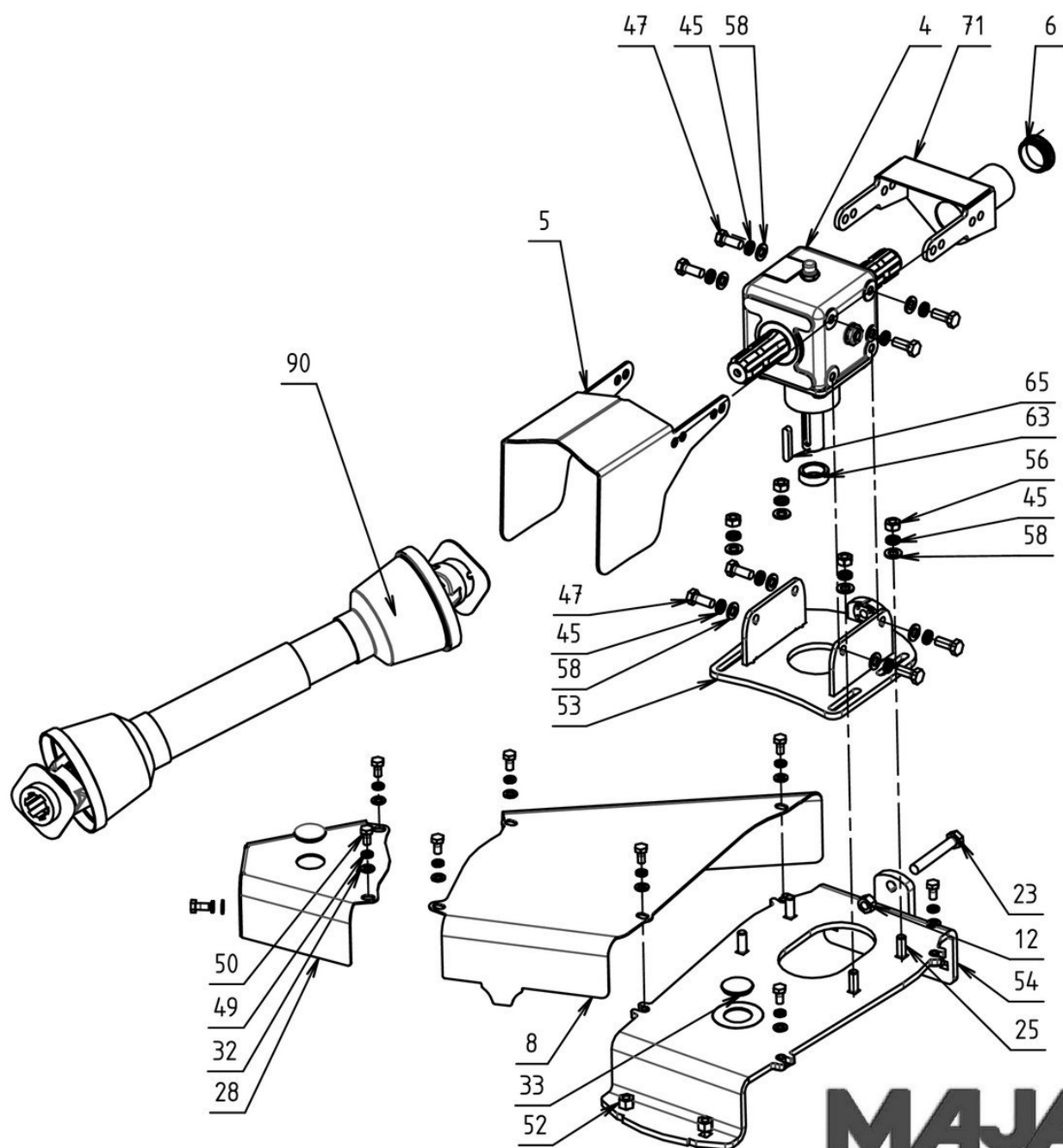
MAJAR ASSUMES NO OBLIGATION AND DOES NOT ALLOW ANYBODY TO ASSUME ANY OTHER OBLIGATION THAN THEM IN THE 3 PREVIOUS PARAGRAPHS.

To obtain the name of resseller, contact:

MAJAR S.A
1 Route de Montréal
CS30074
11890 CARCASSONNE Cedex 9
FRANCE

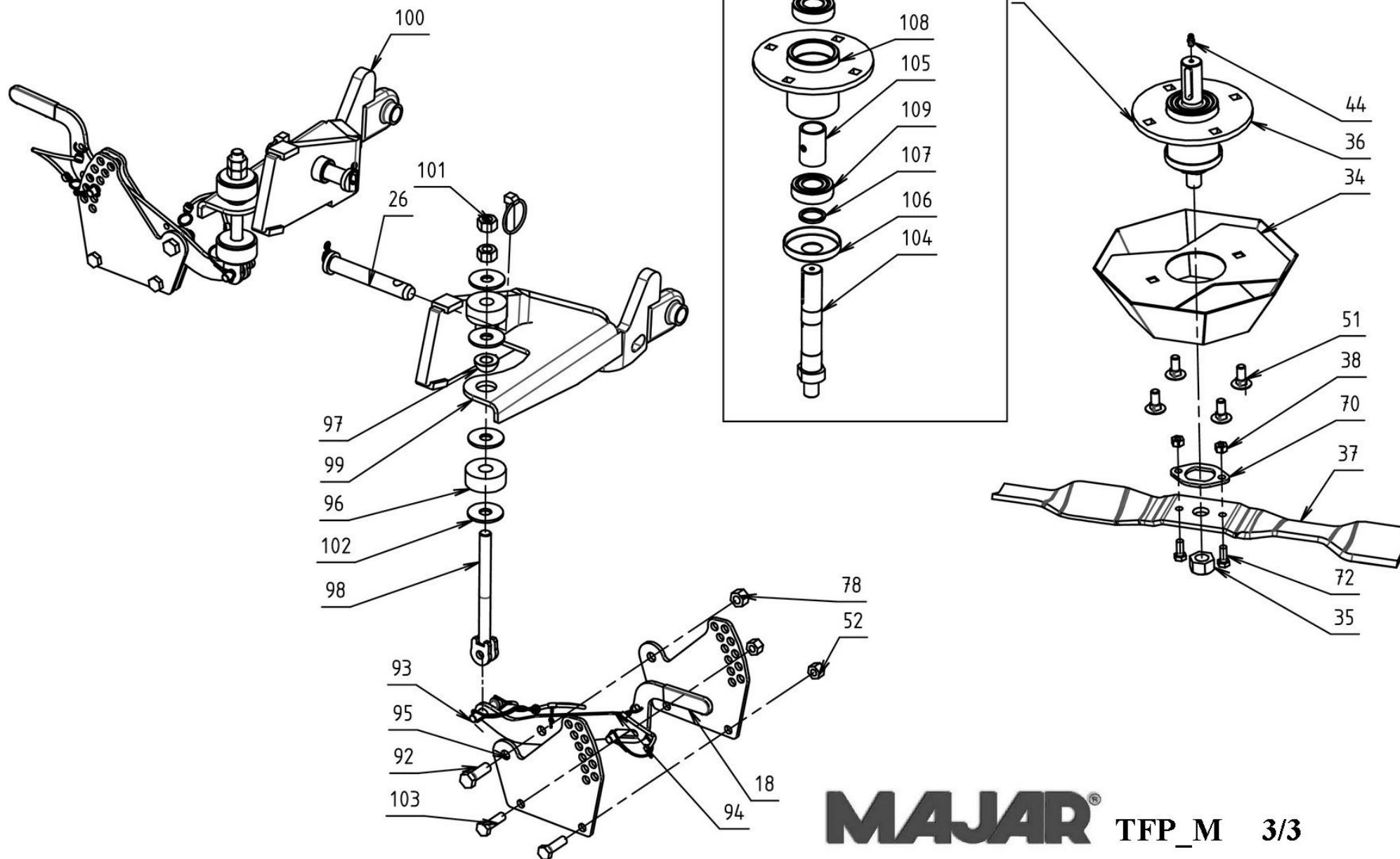
SPARE PART LIST

According to Article L.111-3 of the Consumer Code and of the Decree implementing the Code N°2014-1482 of 9th of december 2014, the availability duration of indispensable spare parts for use of MAJAR material is **7 years**.



MAJAR®

TFP_M 1/3



Number	Reference	Designation	TFP 150M KF3890	TFP 180M KF3890	TFP 150M ISF310	TFP 180M ISF310	TFP 150M JD1580	TFP 180M JD1580
1	582622	FOOTBOARD	1	1	1	1	1	1
2	186604	LEVER	1	1	1	1	1	1
3	186601	INDEXAGING AXLE	1	1	1	1	1	1
4	082833	GEARBOX WG13	1	1	1	1	1	1
5	186566	BOL TOLE	1	1	1	1	1	1
6	082370	PLUG Ø45	1	1	1	1	1	1
7	582615	CHASSIS 150	1	-	1	-	1	-
	582616	CHASSIS 180	-	1	-	1	-	1
8	186563	CARTER INT LEFT 150	1	-	1	-	1	-
	186565	CARTER INT. LEFT 180	-	1	-	1	-	1
9	186562	CARTER INT. RIGHT 150	1	-	1	-	1	-
	186564	CARTER INT. RIGHT 180	-	1	-	1	-	1
10	9900508	LOCKNUT HM8	1	1	1	1	1	1
11	9900546	LOCKNUT HM16	1	1	1	1	1	1
12	9900215	NUT HM12	1	1	1	1	1	1
13	582625	INDEXING SHEATH	1	1	1	1	1	1
14	082540	LINCHPIN Ø10x80	1	1	1	1	1	1
15	9907090	PIN 4x22	1	1	1	1	1	1
16	186579	LEVER	1	1	1	1	1	1
17	186602	PALET	1	1	1	1	1	1
18	082492	PLASTIC HANDLE	3	3	3	3	3	3
19	082794	POULEY 2G DIAM.132	-	1	-	1	-	1
	082795	POULEY 2G DIAM.113	1	-	1	-	1	-
20	082239	RESSORT	1	1	1	1	1	1
21	582623	SUPPORT LEVER	1	1	1	1	1	1
22	9961975	SCREW H - M8 x 35/22	1	1	1	1	1	1
23	9961981	SCREW H - M12 x 80	1	1	1	1	1	1
24	9961938	SCREW H - M16 x 80/38	1	1	1	1	1	1
25	9960700	HEAD SCREW CC 10x35	5	5	5	5	5	5
26	144101	AXLE Ø19	2	2	4	4	4	4
27	082291	PLUG Ø30	2	2	2	2	2	2
28	186560	CARTER EXT.150	2	-	2	-	2	-
	186561	CARTER EXT. 180	-	2	-	2	-	2
29	582575	WHEEL BRACKET	2	2	2	2	2	2
30	582617	AXLE	2	2	2	2	2	2
31	082791	POULEY 1G DIAM.132	-	2	-	2	-	2
	082793	POULEY 1G DIAM.113	2	-	2	-	2	-
32	9908008	WASHER MN 8	16	16	16	16	16	16
33	082788	GREASING PLUG	3	3	3	3	3	3
34	582585	CONE MULCH	3	3	3	3	3	3
35	9900548	LOCKNUT M18x1.5	3	3	3	3	3	3
36	086105	HUBS	3	3	3	3	3	3

Number	Reference	Designation	TFP 150M KF3890	TFP 180M KF3890	TFP 150M ISF310	TFP 180M ISF310	TFP 150M JD1580	TFP 180M JD1580
37	186712	BLADE 150 MULCHING	3	-	3	-	3	-
	186713	BLADE 180 MULCHING	-	3	-	3	-	3
38	9900507	LOCKNUT M8 BASEPLATE	10	10	10	10	10	10
39	186408	SPACER INT. ROLLER	2	2	2	2	2	2
40	186407	ANTI-SCALPING ROLLER	2	2	2	2	2	2
41	9961912	SCREW H - M12 × 70/30	4	4	4	4	4	4
42	9961920	SCREW H - M12 x 160/36	4	4	4	4	4	4
43	9960706	HEAD SCREW CC Ø8x25	4	4	4	4	4	4
44	9907210	OILER RIGHT M 6X100	5	5	5	5	5	5
45	9908074	WASHER W - 10	12	12	12	12	12	12
46	082775	BEARING 20 × 42 × 12	8	8	8	8	8	8
47	9962011	SCREW H - M10 × 25	8	8	8	8	8	8
48	9908012	WASHER MN - 12	17	17	17	17	17	17
49	9908073	WA1SHER W - 8	14	14	14	14	14	14
50	9962003	SCREW H - M8 x 16	14	14	14	14	14	14
51	9960703	M10x25 CC	19	19	19	19	19	19
52	9900504	LOCKNUT M10 BASEPLATE	24	24	24	24	24	24
53	582621	SLIDE HOUSING	1	1	1	1	1	1
54	582620	SUPPORT HOUSING	1	1	1	1	1	1
55	082474	PLUG Ø 20 WHITE	2	2	2	2	2	2
56	9900210	NUT H - M10	4	4	4	4	4	4
57	9908007	WASHER Ø14-Ø24	1	1	1	1	1	1
58	9908010	WASHER MN - 10	12	12	12	12	12	12
63	186042	CHOCK 12MM	1	1	1	1	1	1
64	186720	SIDE ROLLER	2	2	2	2	2	2
65	082752	PIN 8 X 7 LG.45	2	3	2	3	2	3
66	082787	PIN 8 X 7 LG.25	2	1	2	1	2	1
67	186040	CHOCK 2MM	3	3	3	3	3	3
68	186041	CHOCK 6MM	1	2	1	2	1	2
69	186043	CHOCK 25MM	2	1	2	1	2	1
70	186721	LOCKING PLATE	3	3	3	3	3	3
71	582618	GEARBOX PLUG	1	1	1	1	1	1
72	9962001	SCREW H - M8 × 20	6	6	6	6	6	6
73	082378	RIVET POP Ø4,8 Lg 10.9	4	4	4	4	4	4
74	082789	HUB 1610 - Ø25	2	2	2	2	2	2
76	186719	SPACER SIDE ROLLER	2	2	2	2	2	2
77	9961980	SCREW H - M12 × 120/30	2	2	2	2	2	2
78	9900510	LOCKNUT M12 BASEPLATE	12	12	12	12	12	12
79	186412	CHOCK 2MM Ø30,5	2	2	2	2	2	2
80	186413	CHOCK 6MM Ø30,5	2	2	2	2	2	2
81	186414	CHOCK 12MM Ø30,5	2	2	2	2	2	2
82	186415	CHOCK 25MM Ø30,5	2	2	2	2	2	2

Number	Reference	Designation	TFP 150M KF3890	TFP 180M KF3890	TFP 150M ISF310	TFP 180M ISF310	TFP 150M JD1580	TFP 180M JD1580
83	186416	CHOCK 32MM Ø30,5	2	2	2	2	2	2
84	186430	WHEEL SPACER	4	4	4	4	4	4
85	186410	INT. WHEEL SPACER	2	2	2	2	2	2
86	082774	PIN Ø8 X 57	2	2	2	2	2	2
87	082773	WHEEL	2	2	2	2	2	2
88	082790	HUB 2012 - Ø25	1	1	1	1	1	1
89	082792	POULEY 2G DIAM.147	1	1	-	-	-	-
	082796	POULEY 2G DIAM.177	-	-	1	1	-	-
	082797	POULEY 2G DIAM.167	-	-	-	-	1	1
90	082800	CARDAN L=580 1"3/8 Z6-1"3/8 Z6	-	-	1	1	-	-
	082801	CARDAN L=971 1" Z15-1"3/8 Z6	-	-	-	-	1	1
	082802	CARDAN L=647 1" Z10-1"3/8 Z6	1	1	-	-	-	-
91	082729	BELT CMW B73	-	2	-	-	-	2
	082803	BELT CMW B66	-	-	2	-	-	-
	082804	BELT CMW B74	-	-	-	2	-	-
	082827	BELT CMW B64	2	-	-	-	-	-
	082836	BELT CMW B65	-	-	-	-	2	-
92	9962080	SCREW H - M12 × 35	2	2	2	2	2	2
93	082807	LINCHPIN Ø10 LG 38	4	4	4	4	4	4
94	186581	LEVER ISEKI	-	-	2	2	-	-
	186583	LEVER KUBOTA/J.DEERE	2	2	-	-	2	2
95	186582	ADJUSTING PLATE ISEKI	-	-	4	4	-	-
	186584	ADJUSTING PLATE KUBOTA	4	4	-	-	-	-
	186614	ADJUSTING PLATE J.DEERE	-	-	-	-	4	4
96	186585	VALVE	4	4	4	4	4	4
97	186598	SPHERIC WASHER	2	2	2	2	2	2
98	582624	CONNECTING ROD	2	2	2	2	2	2
99	582626	RIGHT ARM ISEKI SF310	-	-	1	1	-	-
	582662	RIGHT ARM J.DEERE	-	-	-	-	1	1
100	582627	LEFT ARM ISEKI SF310	-	-	1	1	-	-
	582663	LEFT ARM J.DEERE	-	-	-	-	1	1
101	9900216	NUT HM14	4	4	4	4	4	4
102	9908011	WASHER LL - 14	8	8	8	8	8	8
103	9962004	SCREW H 10X35/35	4	4	4	4	4	4
104	186525	AXLE PALIER	3	3	3	3	3	3
105	186524	WASHER PALIER	3	3	3	3	3	3
106	186033	DUST COVER	3	3	3	3	3	3
107	186032	DUST COVER WASHER	3	3	3	3	3	3
108	582614	HUB	3	3	3	3	3	3
109	082712	BEARING 25 × 52 × 15	6	6	6	6	6	6
110	082789	HUB 1610 - Ø25	1	-	1	-	1	-
	082790	HUB 2012 - Ø25	-	1	-	1	-	1

MAJAR®

1 Route de Montréal
CS30074
11890 CARCASSONNE Cedex 9
FRANCE

Phone 0033 / 4 68 25 38 16